

# MET Antibody



PACO01061

---

## Product Information

**Size:**

50ug

**Reactivity:**

Human, Mouse, Rat

**Source:**

Rabbit

**Isotype:**

IgG

**Applications:**

ELISA, WB, IF

**Recommended dilutions:**

WB:1:500-1:2000, IF:1:200-1:1000

**Protein Background:****Gene ID:**

MET

**Uniprot**

P08581

**Synonyms:**

MET; Hepatocyte growth factor receptor; HGF receptor; HGF/SF receptor; Proto-oncogene c-Met; Scatter factor receptor; SF receptor; Tyrosine-protein kinase Met

**Immunogen:**

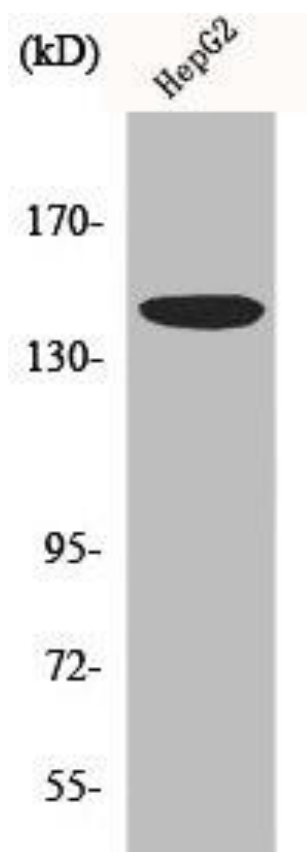
Synthesized peptide derived from human Met around the non-phosphorylation site of Y1003.

**Storage:**

Liquid in PBS containing 50% glycerol, 0.5% BSA and 0.02% sodium azide.

## Product Images

---



Western Blot analysis of HepG2 cells using Met Polyclonal Antibody.