

PPFIBP1 Antibody



PACO01022

Product Information

Size:

50ug

Reactivity:

Human, Mouse

Source:

Rabbit

Isotype:

IgG

Applications:

ELISA, WB

Recommended dilutions:

WB:1:500-1:2000

Protein Background:**Gene ID:**

PPFIBP1

Uniprot

Q86W92

Synonyms:

PPFIBP1; KIAA1230; Liprin-beta-1; Protein tyrosine phosphatase receptor type f polypeptide-interacting protein-binding protein 1; PTPRF-interacting protein-binding protein 1; hSGT2

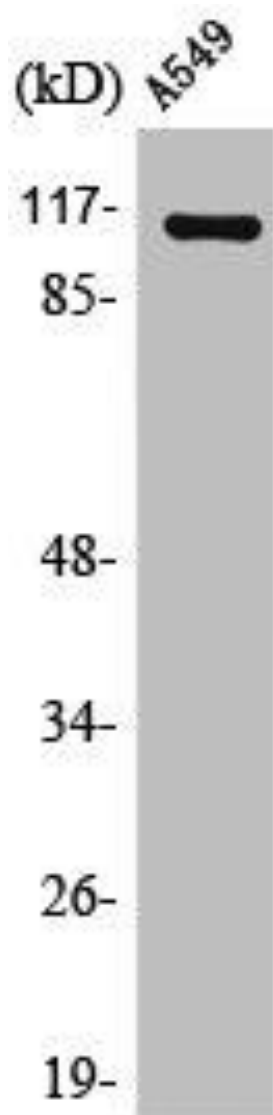
Immunogen:

Synthesized peptide derived from the Internal region of human Liprin Beta1.

Storage:

Liquid in PBS containing 50% glycerol, 0.5% BSA and 0.02% sodium azide.

Product Images



Western Blot analysis of HuvEc cells using Liprin Beta1 Polyclonal Antibody.