

KIF4A Antibody



PACO00999

Product Information

Size:

50ug

Reactivity:

Human

Source:

Rabbit

Isotype:

IgG

Applications:

ELISA, WB

Recommended dilutions:

WB:1:500-1:2000

Protein Background:

Gene ID:

KIF4A

Uniprot

O95239

Synonyms:

KIF4A; KIF4; Chromosome-associated kinesin KIF4A; Chromokinesin-A

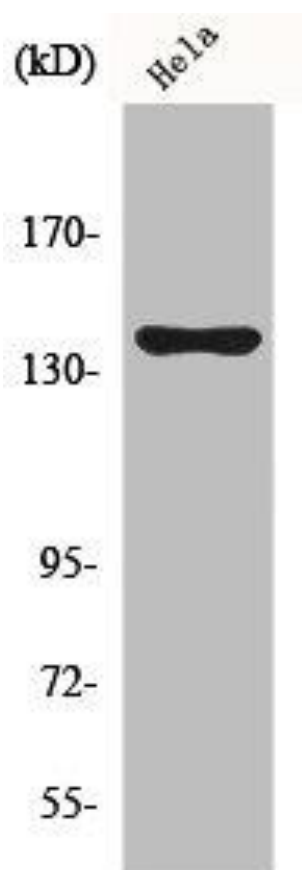
Immunogen:

Synthesized peptide derived from the C-terminal region of human KIF4A.

Storage:

Liquid in PBS containing 50% glycerol, 0.5% BSA and 0.02% sodium azide.

Product Images



Western Blot analysis of COLO205 cells using KIF4A Polyclonal Antibody.