

KCNH1 Antibody



PACO00994

Product Information

Size:

50ug

Reactivity:

Human, Mouse, Rat

Source:

Rabbit

Isotype:

IgG

Applications:

ELISA, WB

Recommended dilutions:

WB:1:500-1:2000

Protein Background:**Gene ID:**

KCNH1

Uniprot

O95259

Synonyms:

KCNH1; EAG; EAG1; Potassium voltage-gated channel subfamily H member 1; Ether-a-go-go potassium channel 1; EAG channel 1; h-eag; hEAG1; Voltage-gated potassium channel subunit Kv10.1

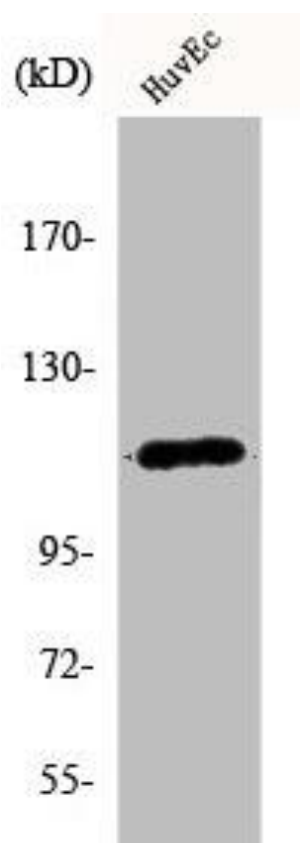
Immunogen:

Synthesized peptide derived from the Internal region of human KCNH1.

Storage:

Liquid in PBS containing 50% glycerol, 0.5% BSA and 0.02% sodium azide.

Product Images



Western Blot analysis of HuvEc cells using KCNH1 Polyclonal Antibody.