

KCNG2 Antibody



PACO00993

Product Information

Size:

50ug

Reactivity:

Human, Mouse, Rat

Source:

Rabbit

Isotype:

IgG

Applications:

ELISA, WB

Recommended dilutions:

WB:1:500-1:2000

Protein Background:**Gene ID:**

KCNG2

Uniprot

Q9UJ96

Synonyms:

KCNG2; KCNF2; Potassium voltage-gated channel subfamily G member 2; Cardiac potassium channel subunit; Voltage-gated potassium channel subunit Kv6.2

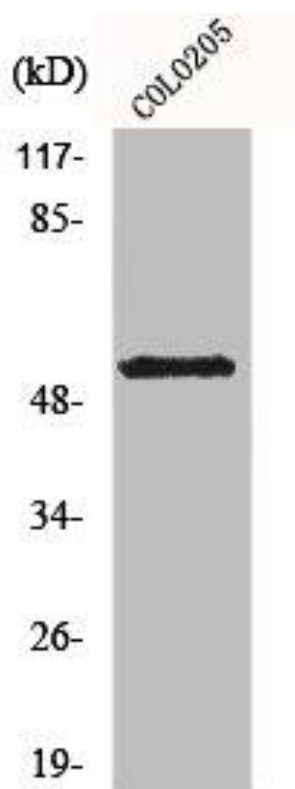
Immunogen:

Synthesized peptide derived from the Internal region of human KCNG2.

Storage:

Liquid in PBS containing 50% glycerol, 0.5% BSA and 0.02% sodium azide.

Product Images



Western Blot analysis of COLO205 cells using KCNG2 Polyclonal Antibody.