

SLC4A1AP Antibody



PACO00992

Product Information

Size:

50ug

Reactivity:

Human, Mouse

Source:

Rabbit

Isotype:

IgG

Applications:

ELISA, WB, IHC, IF

Recommended dilutions:

WB:1:500-1:2000, IHC:1:100-1:300,
IF:1:200-1:1000

Protein Background:

Gene ID:

SLC4A1AP

Uniprot

Q9BWU0

Synonyms:

SLC4A1AP; HLC3; Kanadaplin; Human lung cancer oncogene 3 protein; HLC-3; Kidney anion exchanger adapter protein; Solute carrier family 4 anion exchanger member 1 adapter protein

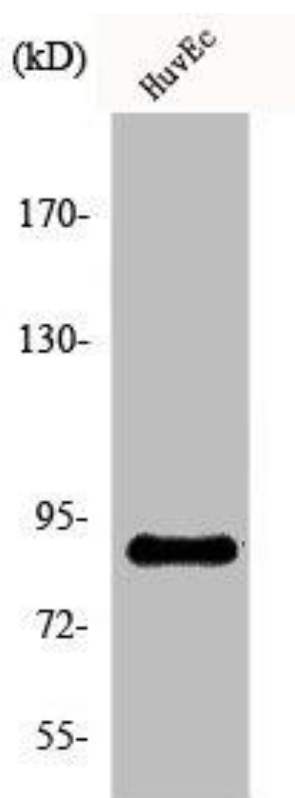
Immunogen:

Synthesized peptide derived from the Internal region of human Kanadaplin.

Storage:

Liquid in PBS containing 50% glycerol, 0.5% BSA and 0.02% sodium azide.

Product Images



Western Blot analysis of HuvEc cells using Kanadaplin Polyclonal Antibody.