

ITGB3 Antibody



PACO00973

Product Information

Size:

50ug

Reactivity:

Human, Mouse

Source:

Rabbit

Isotype:

IgG

Applications:

ELISA, WB, IHC

Recommended dilutions:

WB:1:500-1:2000, IHC:1:100-1:300

Protein Background:**Gene ID:**

ITGB3

Uniprot

P05106

Synonyms:

ITGB3; GP3A; Integrin beta-3; Platelet membrane glycoprotein IIIa; GPIIIa; CD antigen CD61

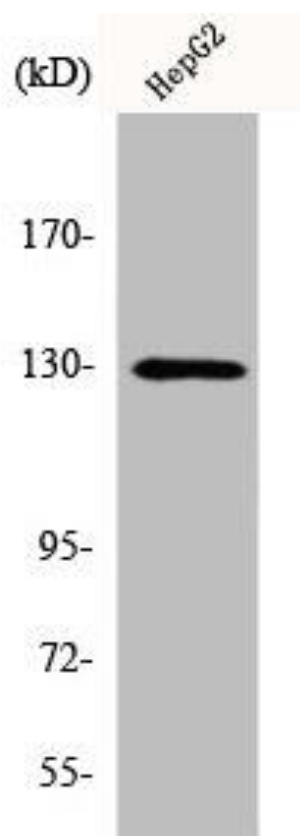
Immunogen:

Synthesized peptide derived from human Integrin Beta3 around the non-phosphorylation site of Y773.

Storage:

Liquid in PBS containing 50% glycerol, 0.5% BSA and 0.02% sodium azide.

Product Images



Western Blot analysis of HepG2 cells using Integrin Beta3 Polyclonal Antibody.