

HSFX1 Antibody



PACO00942

Product Information

Size:

50ug

Reactivity:

Human

Source:

Rabbit

Isotype:

IgG

Applications:

ELISA, WB

Recommended dilutions:

WB:1:500-1:2000

Protein Background:

Gene ID:

HSFX1

Uniprot

Q9UBD0

Synonyms:

HSFX1; LW-1; HSF2; Heat shock transcription factor; X-linked

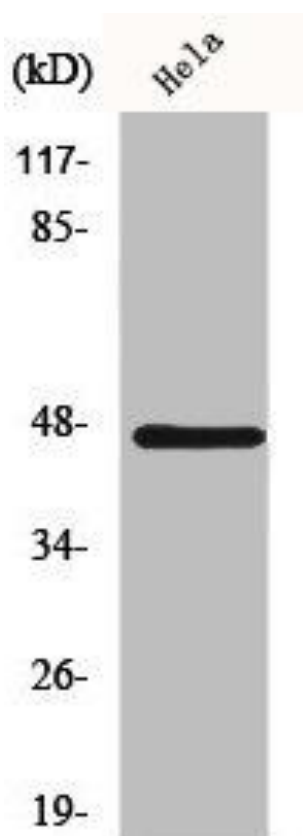
Immunogen:

Synthesized peptide derived from the N-terminal region of human HSFX1.

Storage:

Liquid in PBS containing 50% glycerol, 0.5% BSA and 0.02% sodium azide.

Product Images



Western Blot analysis of HeLa cells using HSF1 Polyclonal Antibody.