

HORMAD1 Antibody



PACO00928

Product Information

Size:

50ug

Reactivity:

Human

Source:

Rabbit

Isotype:

IgG

Applications:

ELISA, WB

Recommended dilutions:

WB:1:500-1:2000

Protein Background:

Gene ID:

HORMAD1

Uniprot

Q86X24

Synonyms:

HORMAD1; NOHMA; HORMA domain-containing protein 1; Cancer/testis antigen 46; CT46; Newborn ovary HORMA protein

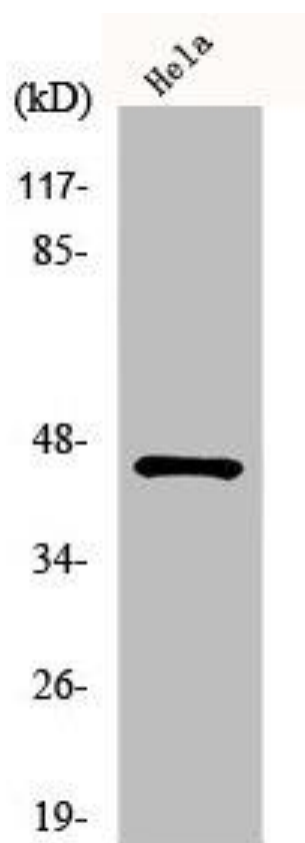
Immunogen:

Synthesized peptide derived from the C-terminal region of human HORMAD1.

Storage:

Liquid in PBS containing 50% glycerol, 0.5% BSA and 0.02% sodium azide.

Product Images



Western Blot analysis of COLO205 cells using HORMAD1 Polyclonal Antibody.