

CYTH3 Antibody



PACO00889

Product Information

Size:

50ug

Reactivity:

Human, Mouse, Rat, Monkey

Source:

Rabbit

Isotype:

IgG

Applications:

ELISA, WB

Recommended dilutions:

WB:1:500-1:2000

Protein Background:

Gene ID:

CYTH3

Uniprot

O43739

Synonyms:

CYTH3; ARNO3; GRP1; PSCD3; Cytohesin-3; ARF nucleotide-binding site opener 3; Protein ARNO3; General receptor of phosphoinositides 1; Grp1; PH; SEC7 and coiled-coil domain-containing protein 3

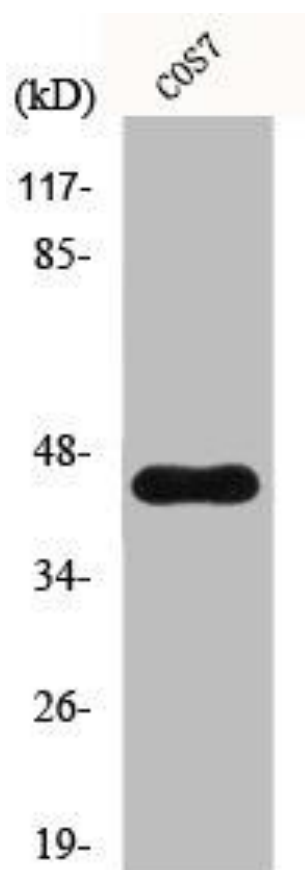
Immunogen:

Synthesized peptide derived from the C-terminal region of human GRP1.

Storage:

Liquid in PBS containing 50% glycerol, 0.5% BSA and 0.02% sodium azide.

Product Images



Western Blot analysis of COS7 cells using GRP1 Polyclonal Antibody.