

# GRK1 Antibody



PACO00886

---

## Product Information

**Size:**

50ug

**Reactivity:**

Human, Mouse, Rat

**Source:**

Rabbit

**Isotype:**

IgG

**Applications:**

ELISA, WB, IHC

**Recommended dilutions:**

WB:1:500-1:2000, IHC:1:100-1:300

**Protein Background:**

**Gene ID:**

GRK1

**Uniprot**

Q15835

**Synonyms:**

GRK1; RHOK; Rhodopsin kinase; RK; G protein-coupled receptor kinase 1

**Immunogen:**

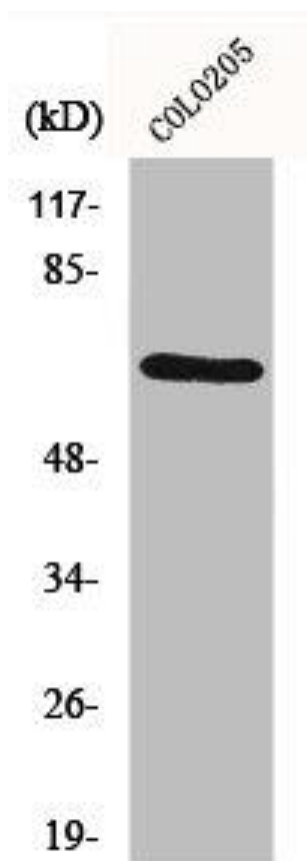
Synthesized peptide derived from human GRK 1 around the non-phosphorylation site of S21.

**Storage:**

Liquid in PBS containing 50% glycerol, 0.5% BSA and 0.02% sodium azide.

## Product Images

---



Western Blot analysis of COLO205 cells using GRK 1 Polyclonal Antibody.