

GPRIN2 Antibody



PACO00885

Product Information

Size:

50ug

Reactivity:

Human

Source:

Rabbit

Isotype:

IgG

Applications:

ELISA, WB, IHC

Recommended dilutions:

WB:1:500-1:2000, IHC:1:100-1:300

Protein Background:**Gene ID:**

GPRIN2

Uniprot

O60269

Synonyms:

GPRIN2; KIAA0514; G protein-regulated inducer of neurite outgrowth 2; GRIN2

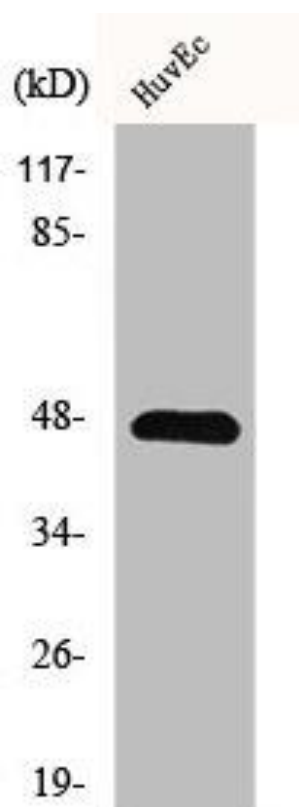
Immunogen:

Synthesized peptide derived from the N-terminal region of human GRIN2.

Storage:

Liquid in PBS containing 50% glycerol, 0.5% BSA and 0.02% sodium azide.

Product Images



Western Blot analysis of HepG2 cells using GRIN2 Polyclonal Antibody.