

LPAR5 Antibody



PACO00881

Product Information

Size:

50ug

Reactivity:

Human

Source:

Rabbit

Isotype:

IgG

Applications:

ELISA, WB, IHC, IF

Recommended dilutions:

WB:1:500-1:2000, IHC:1:100-1:300,
IF:1:200-1:1000

Protein Background:**Gene ID:**

LPAR5

Uniprot

Q9H1C0

Synonyms:

LPAR5; GPR92; GPR93; Lysophosphatidic acid receptor 5; LPA receptor 5; LPA-5; G-protein coupled receptor 92; G-protein coupled receptor 93

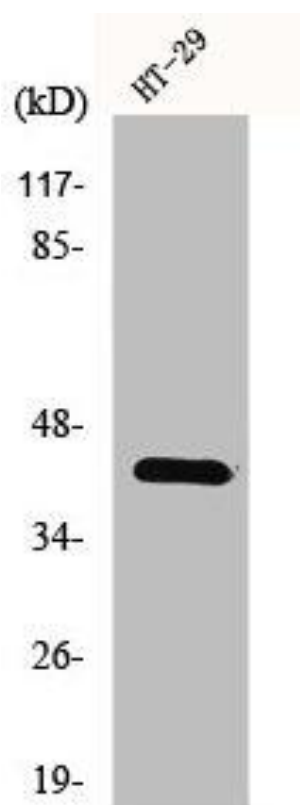
Immunogen:

Synthesized peptide derived from the Internal region of human GPR92.

Storage:

Liquid in PBS containing 50% glycerol, 0.5% BSA and 0.02% sodium azide.

Product Images



Western Blot analysis of K562 cells using GPR92 Polyclonal Antibody.