

PACO00876

Product Information

Size:

50ug

Reactivity:

Human

Source:

Rabbit

Isotype:

IgG

Applications:

ELISA, WB

Recommended dilutions:

WB:1:500-1:2000

Protein Background:

Gene ID:

MLNR

Uniprot

O43193

Synonyms:

MLNR; GPR38; MTLR; MTLR1; Motilin receptor; G-protein coupled receptor 38

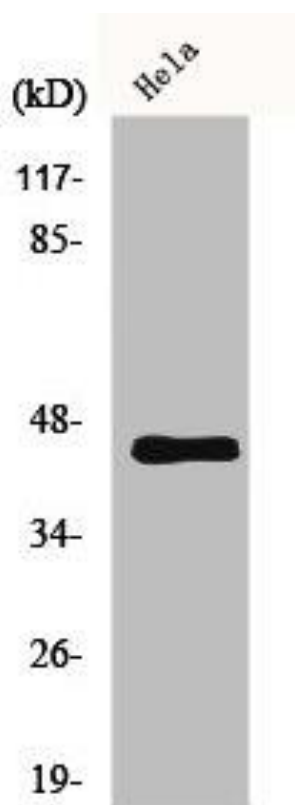
Immunogen:

Synthesized peptide derived from the C-terminal region of human GPR38.

Storage:

Liquid in PBS containing 50% glycerol, 0.5% BSA and 0.02% sodium azide.

Product Images



Western Blot analysis of HeLa cells using GPR38 Polyclonal Antibody.