

GPR18 Antibody



PACO00873

Product Information

Size:

50ug

Reactivity:

Human

Source:

Rabbit

Isotype:

IgG

Applications:

ELISA, WB, IF

Recommended dilutions:

WB:1:500-1:2000, IF:1:200-1:1000

Protein Background:**Gene ID:**

GPR18

Uniprot

Q14330

Synonyms:

GPR18; GPCRW; N-arachidonyl glycine receptor; NAGly receptor; G-protein coupled receptor 18

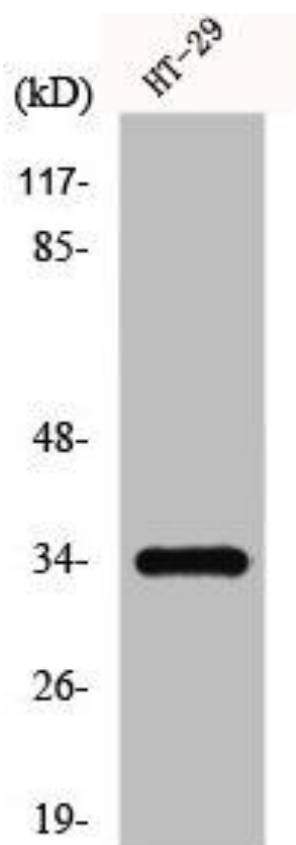
Immunogen:

Synthesized peptide derived from the Internal region of human GPR18.

Storage:

Liquid in PBS containing 50% glycerol, 0.5% BSA and 0.02% sodium azide.

Product Images



Western Blot analysis of HT29 cells using GPR18 Polyclonal Antibody.