

# GPR171 Antibody



PACO00870

---

## Product Information

**Size:**

50ug

**Reactivity:**

Human

**Source:**

Rabbit

**Isotype:**

IgG

**Applications:**

ELISA, WB, IF

**Recommended dilutions:**

WB:1:500-1:2000, IF:1:200-1:1000

**Protein Background:****Gene ID:**

GPR171

**Uniprot**

O14626

**Synonyms:**

GPR171; H963; Probable G-protein coupled receptor 171; G-protein coupled receptor H963

**Immunogen:**

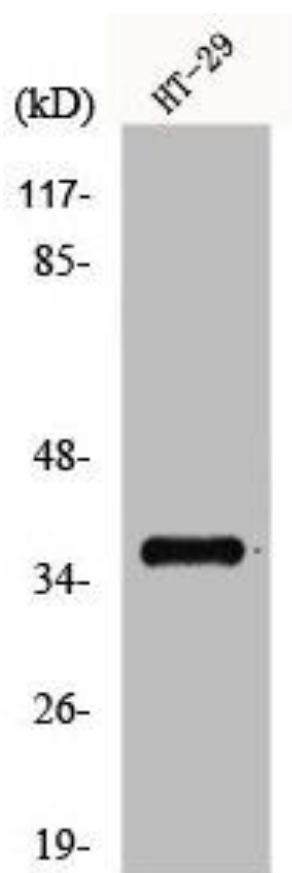
Synthesized peptide derived from the Internal region of human GPR171.

**Storage:**

Liquid in PBS containing 50% glycerol, 0.5% BSA and 0.02% sodium azide.

## Product Images

---



Western Blot analysis of HT29 cells using GPR171 Polyclonal Antibody.