

GPR108 Antibody



PACO00863

Product Information

Size:

50ug

Reactivity:

Human

Source:

Rabbit

Isotype:

IgG

Applications:

ELISA, WB, IF

Recommended dilutions:

WB:1:500-1:2000, IF:1:200-1:1000

Protein Background:**Gene ID:**

GPR108

Uniprot

Q9NPR9

Synonyms:

GPR108; LUSTR2; Protein GPR108; Lung seven transmembrane receptor 2

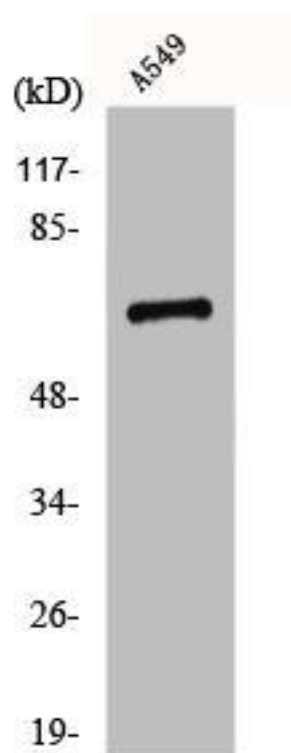
Immunogen:

Synthesized peptide derived from the Internal region of human GPR108.

Storage:

Liquid in PBS containing 50% glycerol, 0.5% BSA and 0.02% sodium azide.

Product Images



Western Blot analysis of A549 cells using GPR108 Polyclonal Antibody.