

GPR101 Antibody



PACO00860

Product Information

Size:

50ug

Reactivity:

Human, Mouse, Monkey

Source:

Rabbit

Isotype:

IgG

Applications:

ELISA, WB, IF

Recommended dilutions:

WB:1:500-1:2000, IF:1:200-1:1000

Protein Background:

Gene ID:

GPR101

Uniprot

Q96P66

Synonyms:

GPR101; Probable G-protein coupled receptor 101

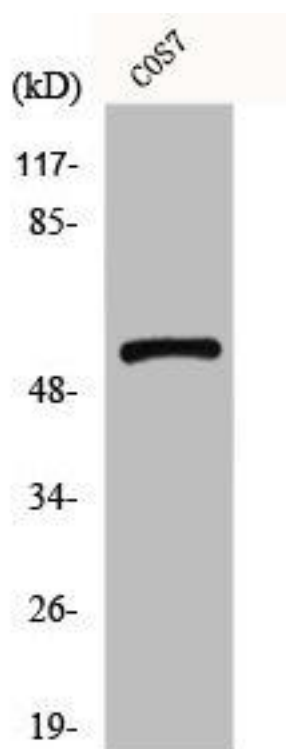
Immunogen:

Synthesized peptide derived from the C-terminal region of human GPR101.

Storage:

Liquid in PBS containing 50% glycerol, 0.5% BSA and 0.02% sodium azide.

Product Images



Western Blot analysis of COS7 cells using GPR101 Polyclonal Antibody.