

GIMAP2 Antibody



PACO00851

Product Information

Size:

50ug

Reactivity:

Human

Source:

Rabbit

Isotype:

IgG

Applications:

ELISA, WB, IF

Recommended dilutions:

WB:1:500-1:2000, IF:1:200-1:1000

Protein Background:

Gene ID:

GIMAP2

Uniprot

Q9UG22

Synonyms:

GIMAP2; IMAP2; GTPase IMAP family member 2; Immunity-associated protein 2; hIMAP2

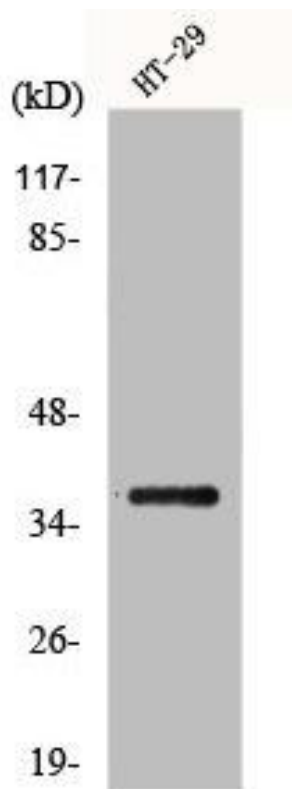
Immunogen:

Synthesized peptide derived from the Internal region of human GIMAP2.

Storage:

Liquid in PBS containing 50% glycerol, 0.5% BSA and 0.02% sodium azide.

Product Images



Western Blot analysis of HT29 cells using GIMAP2 Polyclonal Antibody.