

GDF9 Antibody



PACO00850

Product Information

Size:

50ug

Reactivity:

Human

Source:

Rabbit

Isotype:

IgG

Applications:

ELISA, WB, IHC

Recommended dilutions:

WB:1:500-1:2000, IHC:1:100-1:300

Protein Background:

Gene ID:

GDF9

Uniprot

O60383

Synonyms:

GDF9; Growth/differentiation factor 9; GDF-9

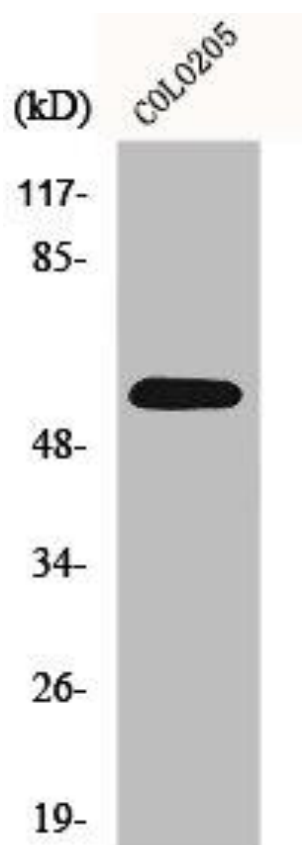
Immunogen:

Synthesized peptide derived from the Internal region of human GDF-9.

Storage:

Liquid in PBS containing 50% glycerol, 0.5% BSA and 0.02% sodium azide.

Product Images



Western Blot analysis of COLO205 cells using GDF-9 Polyclonal Antibody.