

GALK1 Antibody



PACO00835

Product Information

Size:

50ug

Reactivity:

Human, Mouse, Rat

Source:

Rabbit

Isotype:

IgG

Applications:

ELISA, WB, IHC, IF

Recommended dilutions:

WB:1:500-1:2000, IHC:1:100-1:300,
IF:1:200-1:1000

Protein Background:

Gene ID:

GALK1

Uniprot

P51570

Synonyms:

GALK1; GALK; Galactokinase; Galactose kinase

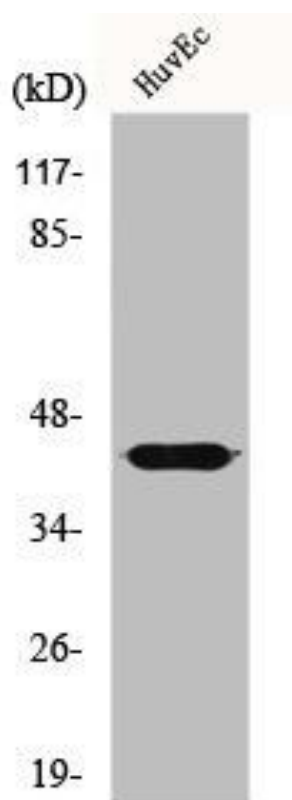
Immunogen:

Synthesized peptide derived from the N-terminal region of human GALK1.

Storage:

Liquid in PBS containing 50% glycerol, 0.5% BSA and 0.02% sodium azide.

Product Images



Western Blot analysis of HeLa cells using GALK1 Polyclonal Antibody.