

# FER Antibody



PACO00799

---

## Product Information

**Size:**

50ug

**Reactivity:**

Human, Mouse, Rat

**Source:**

Rabbit

**Isotype:**

IgG

**Applications:**

ELISA, WB, IHC, IF

**Recommended dilutions:**

WB:1:500-1:2000, IHC:1:100-1:300,  
IF:1:200-1:1000

**Protein Background:****Gene ID:**

FER

**Uniprot**

P16591

**Synonyms:**

FER; TYK3; Tyrosine-protein kinase Fer; Feline encephalitis virus-related kinase FER; Fujinami poultry sarcoma/Feline sarcoma-related protein Fer; Proto-oncogene c-Fer; Tyrosine kinase 3; p94-Fer

**Immunogen:**

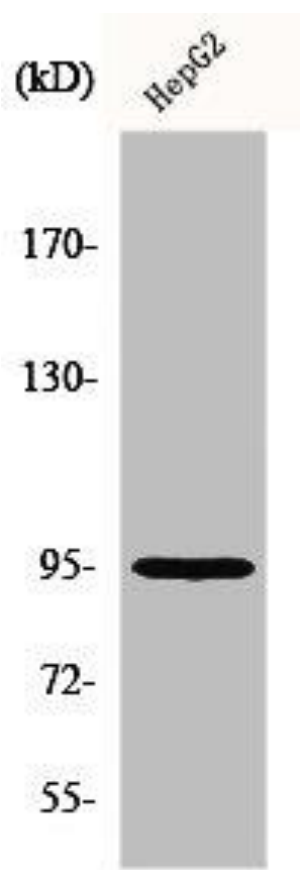
Synthesized peptide derived from the C-terminal region of human Fer.

**Storage:**

Liquid in PBS containing 50% glycerol, 0.5% BSA and 0.02% sodium azide.

## Product Images

---



Western Blot analysis of HuvEc cells using Fer Polyclonal Antibody.