

RIMKLB Antibody



PACO00789

Product Information

Size:

50ug

Reactivity:

Human, Mouse, Rat, Monkey

Source:

Rabbit

Isotype:

IgG

Applications:

ELISA, WB

Recommended dilutions:

WB:1:500-1:2000

Protein Background:**Gene ID:**

RIMKLB

Uniprot

Q9ULI2

Synonyms:

RIMKLB; FAM80B; KIAA1238; Beta-citryl-glutamate synthase B; N-acetyl-aspartyl-glutamate synthetase B; NAAG synthetase B; NAAGS; Ribosomal protein S6 modification-like protein B

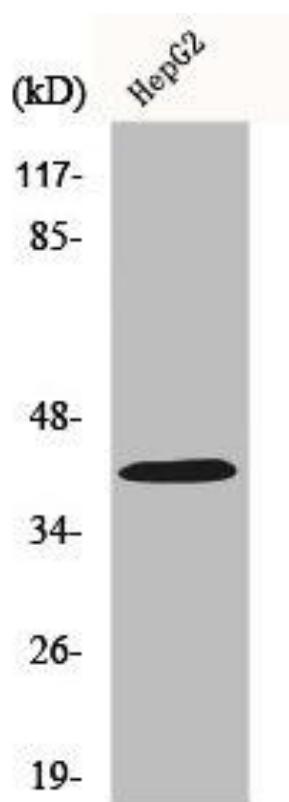
Immunogen:

Synthesized peptide derived from the Internal region of human FAM80B.

Storage:

Liquid in PBS containing 50% glycerol, 0.5% BSA and 0.02% sodium azide.

Product Images



Western Blot analysis of COS7 cells using FAM80B Polyclonal Antibody.