

# EPN2 Antibody



PACO00772

---

## Product Information

**Size:**

50ug

**Reactivity:**

Human, Mouse, Rat

**Source:**

Rabbit

**Isotype:**

IgG

**Applications:**

ELISA, WB, IHC

**Recommended dilutions:**

WB:1:500-1:2000, IHC:1:100-1:300

**Protein Background:**

**Gene ID:**

EPN2

**Uniprot**

O95208

**Synonyms:**

EPN2; KIAA1065; Epsin-2; EPS-15-interacting protein 2

**Immunogen:**

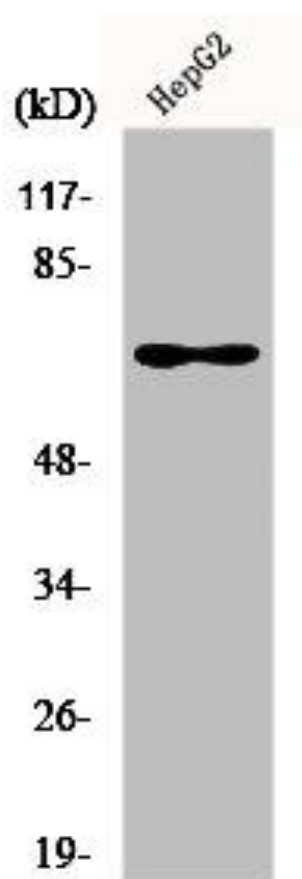
Synthesized peptide derived from the Internal region of human Epsin 2.

**Storage:**

Liquid in PBS containing 50% glycerol, 0.5% BSA and 0.02% sodium azide.

## Product Images

---



Western Blot analysis of HuvEc cells using Epsin 2 Polyclonal Antibody.