

# EFNB1 Antibody



PACO00770

---

## Product Information

**Size:**

50ug

**Reactivity:**

Human, Mouse, Rat, Monkey

**Source:**

Rabbit

**Isotype:**

IgG

**Applications:**

ELISA, WB

**Recommended dilutions:**

WB:1:500-1:2000

**Protein Background:****Gene ID:**

EFNB1

**Uniprot**

P98172

**Synonyms:**

EFNB1; EFL3; EPLG2; LERK2; Ephrin-B1; EFL-3; ELK ligand; ELK-L; EPH-related receptor tyrosine kinase ligand 2; LERK-2

**Immunogen:**

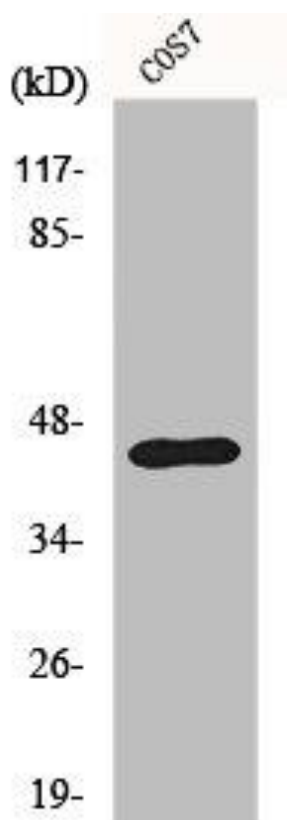
Synthesized peptide derived from human Ephrin-B1 around the non-phosphorylation site of Y317.

**Storage:**

Liquid in PBS containing 50% glycerol, 0.5% BSA and 0.02% sodium azide.

## Product Images

---



Western Blot analysis of COS7 cells using Ephrin-B1 Polyclonal Antibody.