

EOMES Antibody



PACO00762

Product Information

Size:

50ug

Reactivity:

Human, Mouse

Source:

Rabbit

Isotype:

IgG

Applications:

ELISA, WB

Recommended dilutions:

WB:1:500-1:2000

Protein Background:

Gene ID:

EOMES

Uniprot

O95936

Synonyms:

EOMES; TBR2; Eomesodermin homolog; T-box brain protein 2; T-brain-2; TBR-2

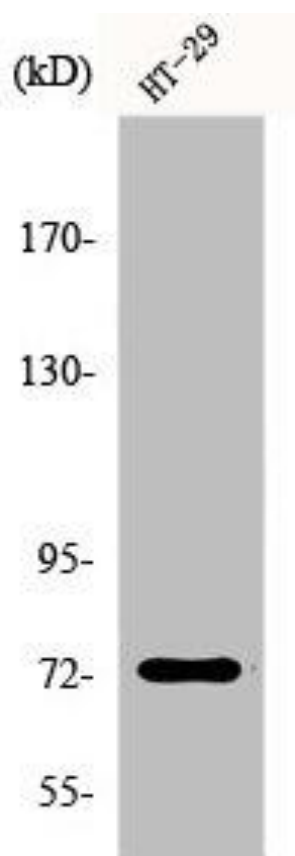
Immunogen:

Synthesized peptide derived from the N-terminal region of human EOMES.

Storage:

Liquid in PBS containing 50% glycerol, 0.5% BSA and 0.02% sodium azide.

Product Images



Western Blot analysis of HepG2 cells using EOMES Polyclonal Antibody.