

PACO00759

---

## Product Information

**Size:**

50ug

**Reactivity:**

Human

**Source:**

Rabbit

**Isotype:**

IgG

**Applications:**

ELISA, WB

**Recommended dilutions:**

WB:1:500-1:2000

**Protein Background:**

**Gene ID:**

EXOG

**Uniprot**

Q9Y2C4

**Synonyms:**

EXOG; ENDOGL1; ENDOGL2; ENGL; Nuclease EXOG; mitochondrial; Endonuclease G-like 1; Endo G-like 1

**Immunogen:**

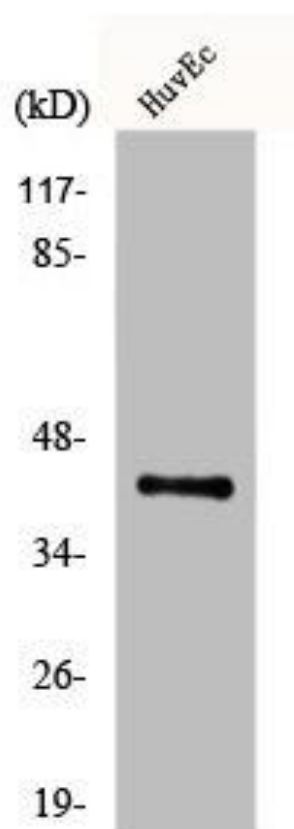
Synthesized peptide derived from the Internal region of human Endo G-L1.

**Storage:**

Liquid in PBS containing 50% glycerol, 0.5% BSA and 0.02% sodium azide.

## Product Images

---



Western Blot analysis of HuvEc cells using Endo G-L1 Polyclonal Antibody.