

MAEA Antibody



PACO00758

Product Information

Size:

50ug

Reactivity:

Human, Mouse, Rat

Source:

Rabbit

Isotype:

IgG

Applications:

ELISA, WB, IHC

Recommended dilutions:

WB:1:500-1:2000, IHC:1:100-1:300

Protein Background:

Gene ID:

MAEA

Uniprot

Q7L5Y9

Synonyms:

MAEA; EMP; HLC10; PIG5; Macrophage erythroblast attacher; Cell proliferation-inducing gene 5 protein; Erythroblast macrophage protein; Human lung cancer oncogene 10 protein; HLC-10

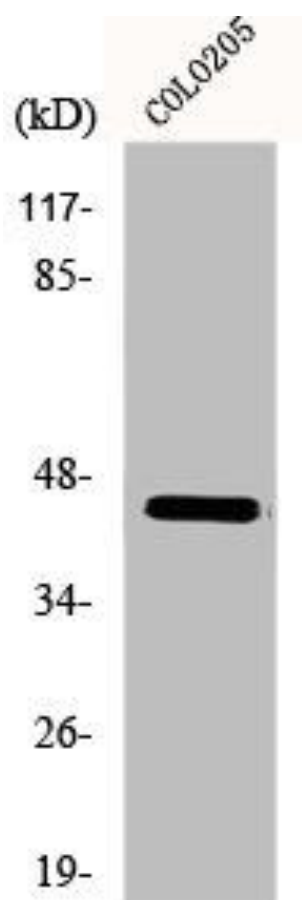
Immunogen:

Synthesized peptide derived from the Internal region of human Emp.

Storage:

Liquid in PBS containing 50% glycerol, 0.5% BSA and 0.02% sodium azide.

Product Images



Western Blot analysis of COLO205 cells using Emp Polyclonal Antibody.