

EIF3L Antibody



PACO00748

Product Information

Size:

50ug

Reactivity:

Human, Mouse

Source:

Rabbit

Isotype:

IgG

Applications:

ELISA, WB, IF

Recommended dilutions:

WB:1:500-1:2000, IF:1:200-1:1000

Protein Background:**Gene ID:**

EIF3L

Uniprot

Q9Y262

Synonyms:

EIF3L; EIF3EIP; EIF3S6IP; HSPC021; HSPC025; MSTP005; Eukaryotic translation initiation factor 3 subunit L; eIF3L; Eukaryotic translation initiation factor 3 subunit 6-interacting protein; Eukaryotic translation initiation factor 3 subunit E

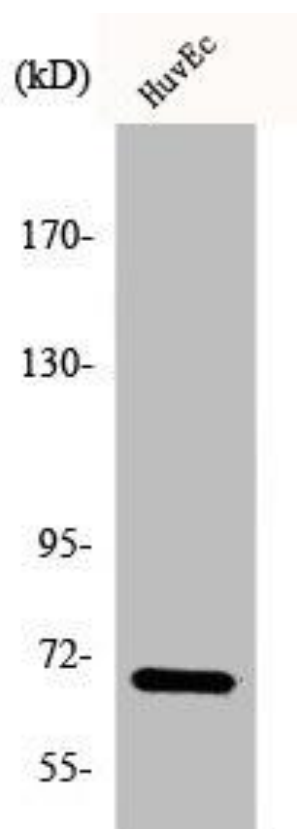
Immunogen:

Synthesized peptide derived from the N-terminal region of human eIF3L.

Storage:

Liquid in PBS containing 50% glycerol, 0.5% BSA and 0.02% sodium azide.

Product Images



Western Blot analysis of HuvEc cells using eIF3L Polyclonal Antibody.