

DUSP19 Antibody



PACO00727

Product Information

Size:

50ug

Reactivity:

Human, Monkey

Source:

Rabbit

Isotype:

IgG

Applications:

ELISA, WB, IF

Recommended dilutions:

WB:1:500-1:2000, IF:1:200-1:1000

Protein Background:

Gene ID:

DUSP19

Uniprot

Q8WTR2

Synonyms:

DUSP19; DUSP17; LMWDSP3; SKRP1; Dual specificity protein phosphatase 19; Dual specificity phosphatase TS-DSP1; Low molecular weight dual specificity phosphatase 3; LMW-DSP3; Protein phosphatase SKRP1; Stress-activated protein kinase pathway

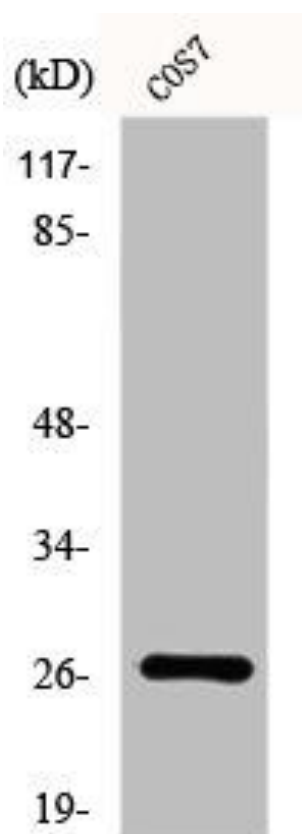
Immunogen:

Synthesized peptide derived from the Internal region of human DUSP19.

Storage:

Liquid in PBS containing 50% glycerol, 0.5% BSA and 0.02% sodium azide.

Product Images



Western Blot analysis of COS7 cells using DUSP19 Polyclonal Antibody.