

DGKD Antibody



PACO00700

Product Information

Size:

50ug

Reactivity:

Human

Source:

Rabbit

Isotype:

IgG

Applications:

ELISA, WB, IHC, IF

Recommended dilutions:

WB:1:500-1:2000, IHC:1:100-1:300,
IF:1:200-1:1000

Protein Background:**Gene ID:**

DGKD

Uniprot

Q16760

Synonyms:

DGKD; KIAA0145; Diacylglycerol kinase delta; DAG kinase delta; 130 kDa diacylglycerol kinase; Diglyceride kinase delta; DGK-delta

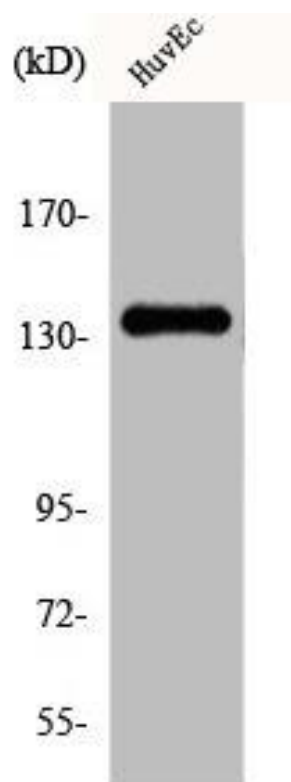
Immunogen:

Synthesized peptide derived from the N-terminal region of human DGK-delta.

Storage:

Liquid in PBS containing 50% glycerol, 0.5% BSA and 0.02% sodium azide.

Product Images



Western Blot analysis of HuvEc cells using DGK-delta Polyclonal Antibody.