

CST11 Antibody



PACO00674

Product Information

Size:

50ug

Reactivity:

Human

Source:

Rabbit

Isotype:

IgG

Applications:

ELISA, WB

Recommended dilutions:

WB:1:500-1:2000

Protein Background:

Gene ID:

CST11

Uniprot

Q9H112

Synonyms:

CST11; CST8L; Cystatin-11

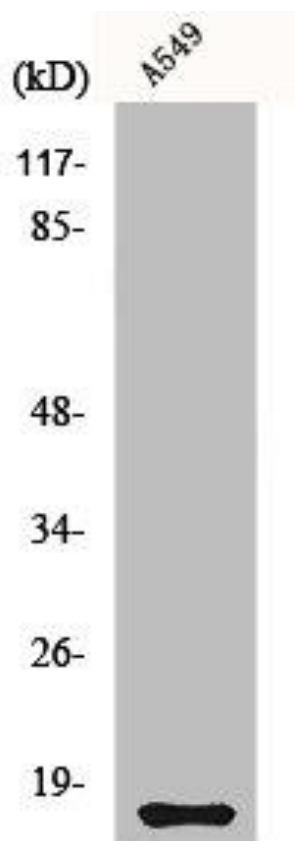
Immunogen:

Synthesized peptide derived from the C-terminal region of human Cystatin 11.

Storage:

Liquid in PBS containing 50% glycerol, 0.5% BSA and 0.02% sodium azide.

Product Images



Western Blot analysis of A549 cells using Cystatin 11 Polyclonal Antibody.