

# CNNM2 Antibody



PACO00658

---

## Product Information

**Size:**

50ug

**Reactivity:**

Human, Mouse, Rat

**Source:**

Rabbit

**Isotype:**

IgG

**Applications:**

ELISA, WB

**Recommended dilutions:**

WB:1:500-1:2000

**Protein Background:**

**Gene ID:**

CNNM2

**Uniprot**

Q9H8M5

**Synonyms:**

CNNM2; ACDP2; Metal transporter CNNM2; Ancient conserved domain-containing protein 2; Cyclin-M2

**Immunogen:**

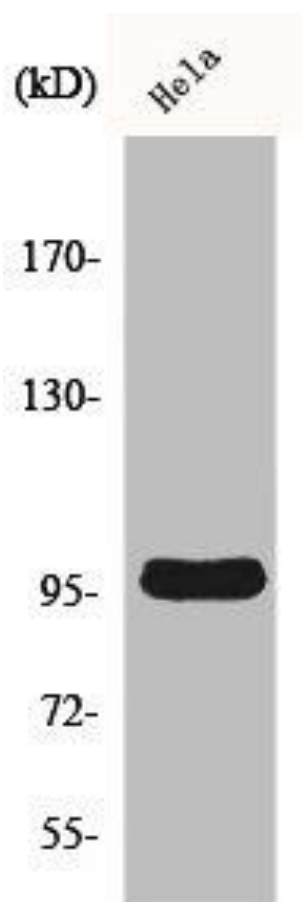
Synthesized peptide derived from the Internal region of human Cyclin M2.

**Storage:**

Liquid in PBS containing 50% glycerol, 0.5% BSA and 0.02% sodium azide.

## Product Images

---



Western Blot analysis of A549 cells using Cyclin M2 Polyclonal Antibody.