

# CCNL1 Antibody



PACO00657

---

## Product Information

**Size:**

50ug

**Reactivity:**

Human, Mouse, Rat

**Source:**

Rabbit

**Isotype:**

IgG

**Applications:**

ELISA, WB, IHC

**Recommended dilutions:**

WB:1:500-1:2000, IHC:1:100-1:300

**Protein Background:**

**Gene ID:**

CCNL1

**Uniprot**

Q9UK58

**Synonyms:**

CCNL1; BM-001; Cyclin-L1; Cyclin-L

**Immunogen:**

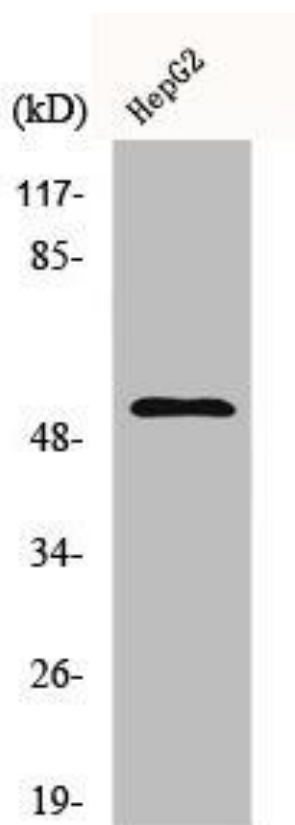
Synthesized peptide derived from the C-terminal region of human Cyclin L1.

**Storage:**

Liquid in PBS containing 50% glycerol, 0.5% BSA and 0.02% sodium azide.

## Product Images

---



Western Blot analysis of HepG2 cells using Cyclin L1 Polyclonal Antibody.