

CRABP2 Antibody



PACO00635

Product Information

Size:

50ug

Reactivity:

Human, Mouse, Rat

Source:

Rabbit

Isotype:

IgG

Applications:

ELISA, WB, IHC

Recommended dilutions:

WB:1:500-1:2000, IHC:1:100-1:300

Protein Background:**Gene ID:**

CRABP2

Uniprot

P29373

Synonyms:

CRABP2; Cellular retinoic acid-binding protein 2; Cellular retinoic acid-binding protein II; CRABP-II

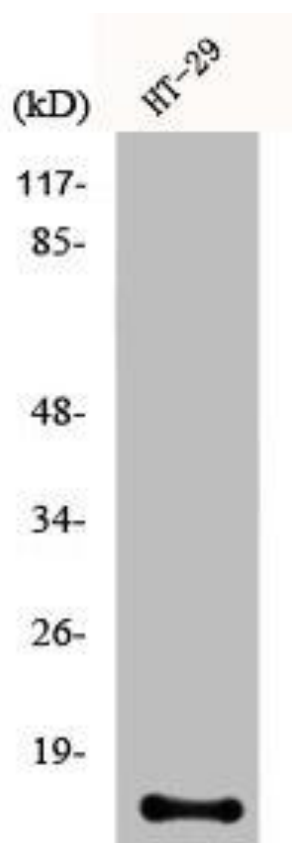
Immunogen:

Synthesized peptide derived from the Internal region of human CRABP-II.

Storage:

Liquid in PBS containing 50% glycerol, 0.5% BSA and 0.02% sodium azide.

Product Images



Western Blot analysis of HT29 cells using CRABP-II Polyclonal Antibody.