

CPA5 Antibody



PACO00633

Product Information

Size:

50ug

Reactivity:

Human, Mouse

Source:

Rabbit

Isotype:

IgG

Applications:

ELISA, WB

Recommended dilutions:

WB:1:500-1:2000

Protein Background:

Gene ID:

CPA5

Uniprot

Q8WXQ8

Synonyms:

CPA5; Carboxypeptidase A5

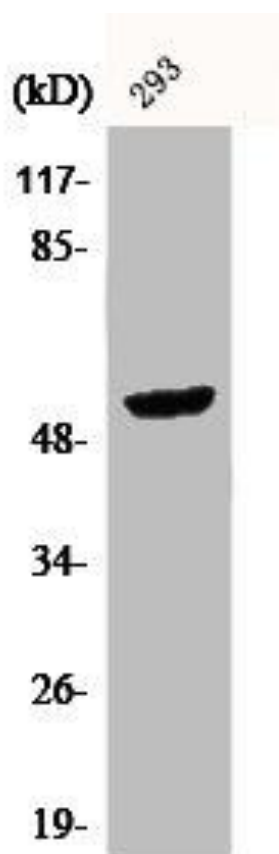
Immunogen:

Synthesized peptide derived from the Internal region of human CPA5.

Storage:

Liquid in PBS containing 50% glycerol, 0.5% BSA and 0.02% sodium azide.

Product Images



Western Blot analysis of 293 cells using CPA5 Polyclonal Antibody.