

# GJB7 Antibody



PACO00625

---

## Product Information

**Size:**

50ug

**Reactivity:**

Human

**Source:**

Rabbit

**Isotype:**

IgG

**Applications:**

ELISA, WB

**Recommended dilutions:**

WB:1:500-1:2000

**Protein Background:**

**Gene ID:**

GJB7

**Uniprot**

Q6PEY0

**Synonyms:**

GJB7; CX25; Gap junction beta-7 protein; Connexin-25; Cx25

**Immunogen:**

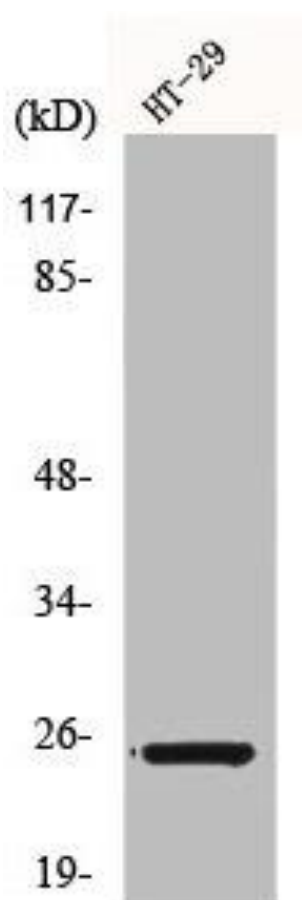
Synthesized peptide derived from the Internal region of human Connexin 25.

**Storage:**

Liquid in PBS containing 50% glycerol, 0.5% BSA and 0.02% sodium azide.

## Product Images

---



Western Blot analysis of HT29 cells using Connexin 25 Polyclonal Antibody.