

COL1A2 Antibody



PACO00622

Product Information

Size:

50ug

Reactivity:

Human

Source:

Rabbit

Isotype:

IgG

Applications:

ELISA, WB, IHC, IF

Recommended dilutions:

WB:1:500-1:2000, IHC:1:100-1:300,
IF:1:200-1:1000

Protein Background:

Gene ID:

COL1A2

Uniprot

P08123

Synonyms:

COL1A2; Collagen alpha-2(I) chain; Alpha-2 type I collagen

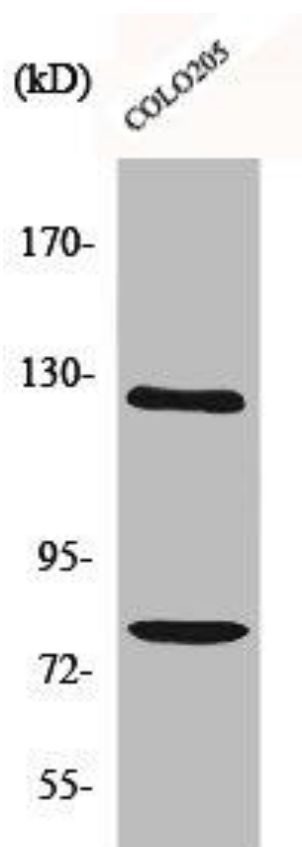
Immunogen:

Synthesized peptide derived from the Internal region of human COL1A2.

Storage:

Liquid in PBS containing 50% glycerol, 0.5% BSA and 0.02% sodium azide.

Product Images



Western Blot analysis of COLO205 cells using COL1A2 Polyclonal Antibody.