

COL11A2 Antibody



PACO00620

Product Information

Size:

50ug

Reactivity:

Human, Mouse

Source:

Rabbit

Isotype:

IgG

Applications:

ELISA, WB, IHC

Recommended dilutions:

WB:1:500-1:2000, IHC:1:100-1:300

Protein Background:

Gene ID:

COL11A2

Uniprot

P13942

Synonyms:

COL11A2; Collagen alpha-2(XI) chain

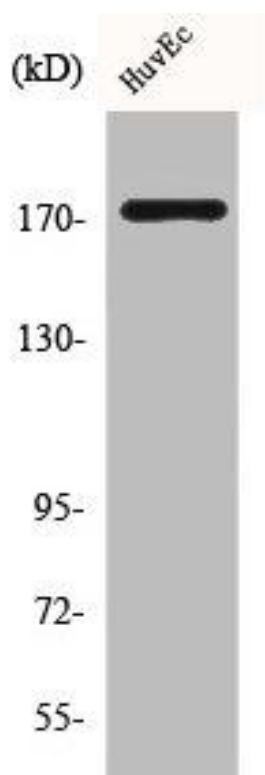
Immunogen:

Synthesized peptide derived from the C-terminal region of human COL11A2.

Storage:

Liquid in PBS containing 50% glycerol, 0.5% BSA and 0.02% sodium azide.

Product Images



Western Blot analysis of HuvEc cells using COL11A2 Polyclonal Antibody.