

CLDN19 Antibody



PACO00606

Product Information

Size:

50ug

Reactivity:

Human, Rat

Source:

Rabbit

Isotype:

IgG

Applications:

ELISA, WB

Recommended dilutions:

WB:1:500-1:2000

Protein Background:

Gene ID:

CLDN19

Uniprot

Q8N6F1

Synonyms:

CLDN19; Claudin-19

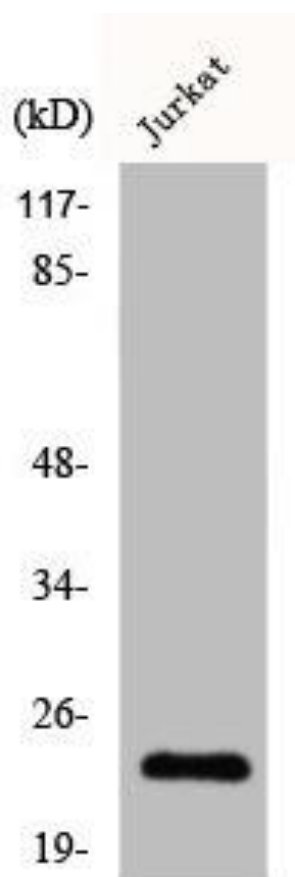
Immunogen:

Synthesized peptide derived from the Internal region of human Claudin-19.

Storage:

Liquid in PBS containing 50% glycerol, 0.5% BSA and 0.02% sodium azide.

Product Images



Western Blot analysis of HepG2 cells using Claudin-19 Polyclonal Antibody.