

CERKL Antibody



PACO00589

Product Information

Size:

50ug

Reactivity:

Human

Source:

Rabbit

Isotype:

IgG

Applications:

ELISA, WB, IHC

Recommended dilutions:

WB:1:500-1:2000, IHC:1:100-1:300

Protein Background:

Gene ID:

CERKL

Uniprot

Q49MI3

Synonyms:

CERKL; Ceramide kinase-like protein

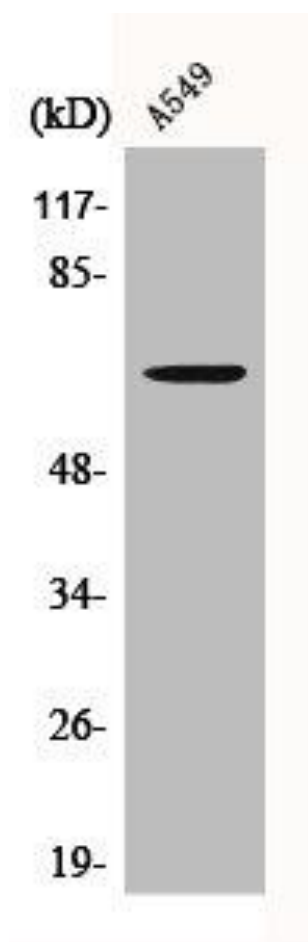
Immunogen:

Synthesized peptide derived from the Internal region of human CERKL

Storage:

Liquid in PBS containing 50% glycerol, 0.5% BSA and 0.02% sodium azide.

Product Images



Western Blot analysis of A549 cells using CERKL Polyclonal Antibody.