

# CDCA3 Antibody



PACO00572

---

## Product Information

**Size:**

50ug

**Reactivity:**

Human, Mouse, Rat

**Source:**

Rabbit

**Isotype:**

IgG

**Applications:**

ELISA, WB, IHC, IF

**Recommended dilutions:**

WB:1:500-1:2000, IHC:1:100-1:300,  
IF:1:200-1:1000

**Protein Background:**

**Gene ID:**

CDCA3

**Uniprot**

Q99618

**Synonyms:**

CDCA3; C8; GRCC8; TOME1; Cell division cycle-associated protein 3; Gene-rich cluster protein C8; Trigger of mitotic entry protein 1; TOME-1

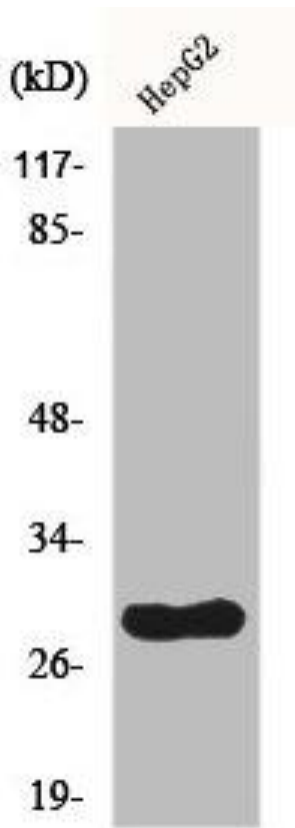
**Immunogen:**

Synthesized peptide derived from the C-terminal region of human CdcA3.

**Storage:**

Liquid in PBS containing 50% glycerol, 0.5% BSA and 0.02% sodium azide.

Product Images



Western Blot analysis of HepG2 cells using CdcA3 Polyclonal Antibody.