

# CD58 Antibody



PACO00560

---

## Product Information

**Size:**

50ug

**Reactivity:**

Human

**Source:**

Rabbit

**Isotype:**

IgG

**Applications:**

ELISA, WB

**Recommended dilutions:**

WB:1:500-1:2000

**Protein Background:**

**Gene ID:**

CD58

**Uniprot**

P19256

**Synonyms:**

CD58; LFA3; Lymphocyte function-associated antigen 3; Ag3; Surface glycoprotein LFA-3; CD antigen CD58

**Immunogen:**

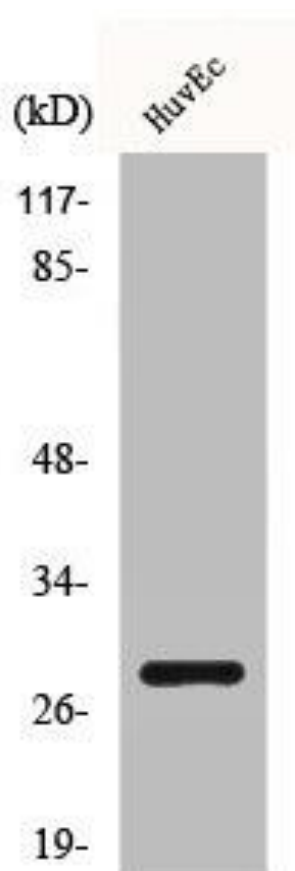
Synthesized peptide derived from the Internal region of human CD58.

**Storage:**

Liquid in PBS containing 50% glycerol, 0.5% BSA and 0.02% sodium azide.

## Product Images

---



Western Blot analysis of HuvEc cells using CD58 Polyclonal Antibody.