

CD5 Antibody



PACO00559

Product Information

Size:

50ug

Reactivity:

Human, Mouse, Rat

Source:

Rabbit

Isotype:

IgG

Applications:

ELISA, WB

Recommended dilutions:

WB:1:500-1:2000

Protein Background:

Gene ID:

CD5

Uniprot

P06127

Synonyms:

CD5; LEU1; T-cell surface glycoprotein CD5; Lymphocyte antigen T1/Leu-1; CD antigen CD5

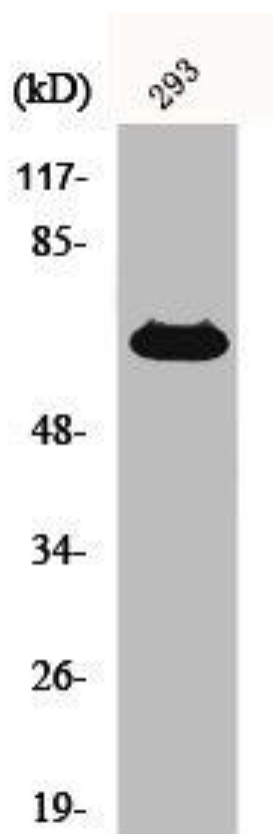
Immunogen:

Synthesized peptide derived from human CD5 around the non-phosphorylation site of Y453.

Storage:

Liquid in PBS containing 50% glycerol, 0.5% BSA and 0.02% sodium azide.

Product Images



Western Blot analysis of 293 cells using CD5 Polyclonal Antibody.