

CD19 Antibody



PACO00551

Product Information

Size:

50ug

Reactivity:

Human, Mouse, Monkey

Source:

Rabbit

Isotype:

IgG

Applications:

ELISA, WB

Recommended dilutions:

WB:1:500-1:2000

Protein Background:

Gene ID:

CD19

Uniprot

P15391

Synonyms:

CD19; B-lymphocyte antigen CD19; B-lymphocyte surface antigen B4; Differentiation antigen CD19; T-cell surface antigen Leu-12; CD antigen CD19

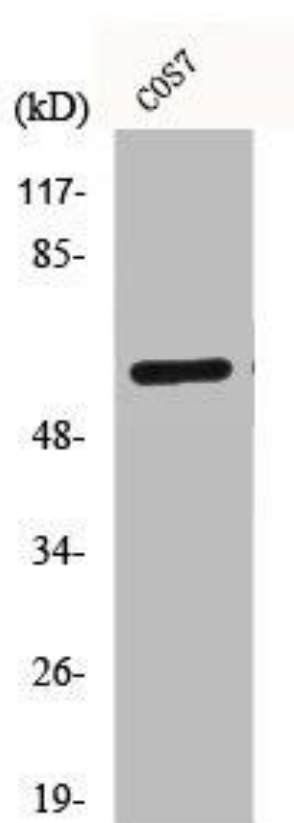
Immunogen:

Synthesized peptide derived from human CD19 around the non-phosphorylation site of Y531.

Storage:

Liquid in PBS containing 50% glycerol, 0.5% BSA and 0.02% sodium azide.

Product Images



Western Blot analysis of COS7 cells using CD19 Polyclonal Antibody.