

# IGLL1/IGLC1/IGLC2/IGLC3/IGLC6/IGLC7 Antibody



PACO00550

---

## Product Information

**Size:**

50ug

**Reactivity:**

Human

**Source:**

Rabbit

**Isotype:**

IgG

**Applications:**

ELISA, WB

**Recommended dilutions:**

WB:1:500-1:2000

**Protein Background:****Gene ID:**

IGLL1/IGLC1/IGLC6/IGLC7

**Uniprot**

P15814/P0CG04/P0CG05/P0CG06/P0CF74/A0M8Q6

**Synonyms:**

IGLL1; IGL1; Immunoglobulin lambda-like polypeptide 1; CD179 antigen-like family member B; Ig lambda-5; Immunoglobulin omega polypeptide; Immunoglobulin-related protein 14.1; CD antigen CD179b; IGLC1; Ig lambda-1 chain C regions; IGLC2; Ig

**Immunogen:**

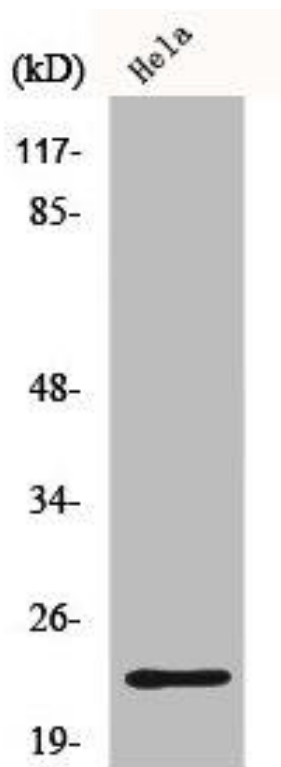
Synthesized peptide derived from the N-terminal region of human CD179b.

**Storage:**

Liquid in PBS containing 50% glycerol, 0.5% BSA and 0.02% sodium azide.

## Product Images

---



Western Blot analysis of K562 cells using CD179b Polyclonal Antibody.