

CD160 Antibody



PACO00548

Product Information

Size:

50ug

Reactivity:

Human

Source:

Rabbit

Isotype:

IgG

Applications:

ELISA, WB, IF

Recommended dilutions:

WB:1:500-1:2000, IF:1:200-1:1000

Protein Background:

Gene ID:

CD160

Uniprot

O95971

Synonyms:

CD160; BY55; CD160 antigen; Natural killer cell receptor BY55; CD antigen CD160

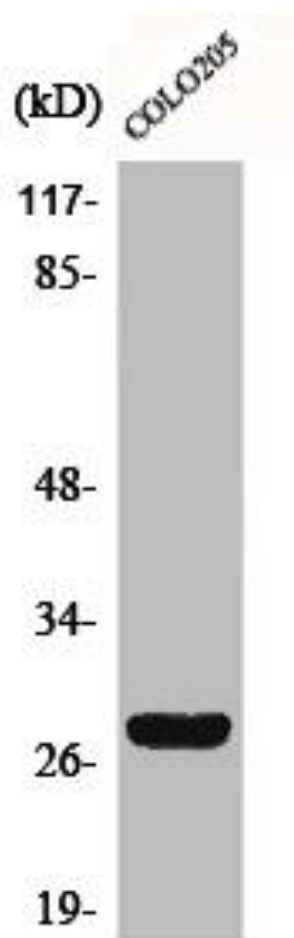
Immunogen:

Synthesized peptide derived from the Internal region of human CD160.

Storage:

Liquid in PBS containing 50% glycerol, 0.5% BSA and 0.02% sodium azide.

Product Images



Western Blot analysis of COLO205 cells using CD160 Polyclonal Antibody.