

SDC1 Antibody



PACO00547

Product Information

Size:

50ug

Reactivity:

Human, Rat

Source:

Rabbit

Isotype:

IgG

Applications:

ELISA, WB

Recommended dilutions:

WB:1:500-1:2000

Protein Background:

Gene ID:

SDC1

Uniprot

P18827

Synonyms:

SDC1; SDC; Syndecan-1; SYND1; CD antigen CD138

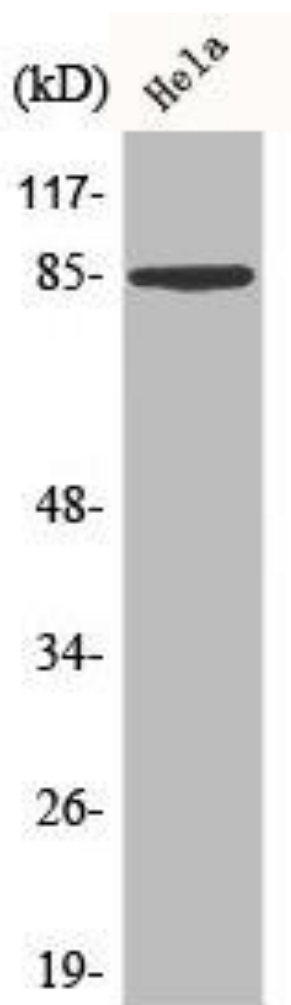
Immunogen:

Synthesized peptide derived from the Internal region of human CD138.

Storage:

Liquid in PBS containing 50% glycerol, 0.5% BSA and 0.02% sodium azide.

Product Images



Western Blot analysis of HeLa cells using CD138 Polyclonal Antibody.