

BEND4 Antibody



PACO00539

Product Information

Size:

50ug

Reactivity:

Human

Source:

Rabbit

Isotype:

IgG

Applications:

ELISA, WB

Recommended dilutions:

WB:1:500-1:2000

Protein Background:

Gene ID:

BEND4

Uniprot

Q6ZU67

Synonyms:

BEND4; CCDC4; BEN domain-containing protein 4; Coiled-coil domain-containing protein 4

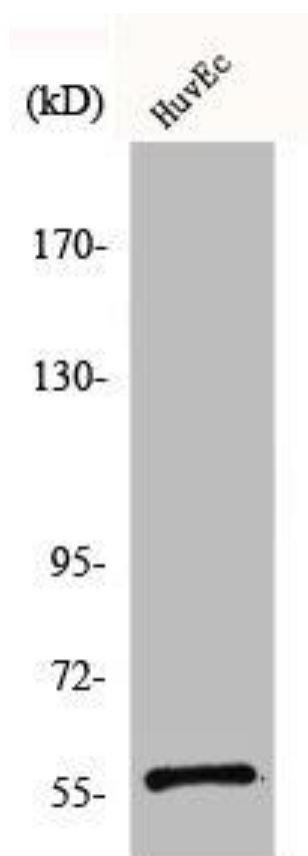
Immunogen:

Synthesized peptide derived from the Internal region of human CCDC4.

Storage:

Liquid in PBS containing 50% glycerol, 0.5% BSA and 0.02% sodium azide.

Product Images



Western Blot analysis of HuvEc cells using CCDC4 Polyclonal Antibody.