

CAPN11 Antibody



PACO00502

Product Information

Size:

50ug

Reactivity:

Human

Source:

Rabbit

Isotype:

IgG

Applications:

ELISA, WB

Recommended dilutions:

WB:1:500-1:2000

Protein Background:

Gene ID:

CAPN11

Uniprot

Q9UMQ6

Synonyms:

CAPN11; Calpain-11; Calcium-activated neutral proteinase 11; CANP 11

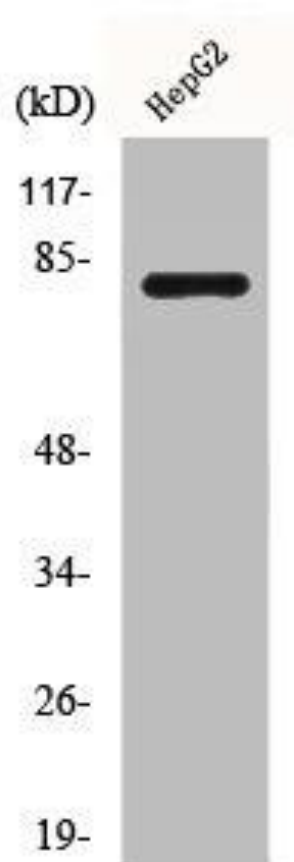
Immunogen:

Synthesized peptide derived from the Internal region of human Calpain 11.

Storage:

Liquid in PBS containing 50% glycerol, 0.5% BSA and 0.02% sodium azide.

Product Images



Western Blot analysis of HuvEc cells using Calpain 11 Polyclonal Antibody.